

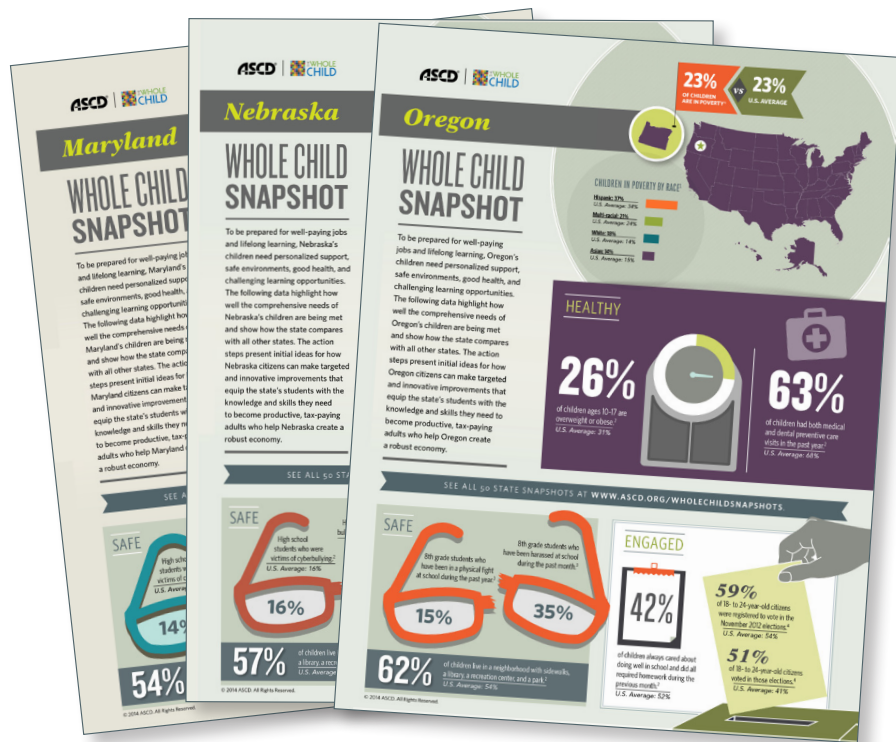
Policy Points

INTRODUCING

ASCD's Whole Child Snapshots

To maximize their academic achievement and personal fulfillment, the nation's children need to be healthy, safe, engaged, supported, and challenged. ASCD's 50-state Whole Child Snapshots, available at www.ascd.org/wholechildsnapshots, feature data aligned with those five tenets to provide a fuller picture of child performance and to highlight how well each state is meeting the comprehensive needs of its children.

The snapshots can be powerful tools in promoting a more student-centered approach to education that addresses each child's development and well-being in addition to academic success. Educators in all roles—from classroom teachers to superintendents—are key partners in using the snapshots to meet this goal. To help, ASCD has compiled the following ideas for how educators can use the Whole Child Snapshots to inspire their own communities' support for the whole child.

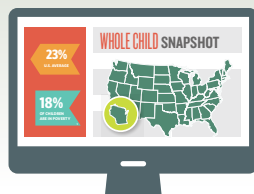


Communicate



1. **TELL** your friends and colleagues about the snapshot.

2. **SHARE** it with parents. Feature it on school or district websites, blogs, social networking channels like Facebook and Twitter, and newsletters. Present it to your local parent teacher association and other parent groups.



3. **SHOW** the snapshot to your students; incorporate it into project-based learning. Have your students identify related local data, design their own infographics, research policy solutions, or make recommendations for improvement.

4. **USE** the snapshot as the basis for a school or community conversation. Some questions to consider:

- What findings surprised you the most?
Surprised you the least?
- Which indicators do you think need the most improvement?
Where are areas of strength?
- Are the state results consistent with conditions in your local area?

Implement

1. **SEE** the snapshot's action steps for initial ideas on how communities can support the whole child.

- Which of the suggested next steps are the most promising for driving improvement in your state or community?
- What other ideas do you have for supporting the whole child in your community?

2. **IDENTIFY** school- or district-level data that align with the snapshot's state-level data to compare your local performance to that of the state.



3. **BRAINSTORM** other key measures of student success and well-being that can be used to track performance over time.

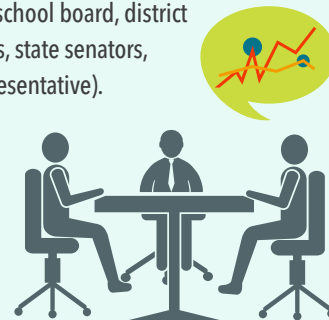


4. **INCORPORATE** the whole child approach into your school or district's mission or vision. Include whole child practices or measures in your school or district's strategic plan or report card.



Advocate

1. **SHARE** the snapshot with your local and state policy-makers (e.g., school board, district administrators, state senators, and state representative).



2. **TELL** local officials about your support for the whole child approach, and use the snapshot to communicate the importance of addressing kids' comprehensive needs.



3. **USE** the snapshot to build the case for a state or local resolution that affirms support for a whole child approach to education.
4. **IDENTIFY** and advance a local or state policy change that could improve performance on one of the snapshot indicators or help your school or district improve its support of students.



RELATED RESOURCES

- ASCD's guides for community conversations allow all stakeholders to explore and discuss the best ways to support the whole child (www.wholechildeducation.org/take-action/comm-convos).
- School-level indicators provide more detail about how schools can ensure that students are healthy, safe, engaged, supported, and challenged (www.ascd.org/wholechildindicators).
- ASCD's School Improvement Tool, a free online needs assessment survey, measures school or district performance on the Whole Child indicators and components (www.sitool.ascd.org).
- The Whole Child website includes several resources, such as examples of schools that support the whole child and podcasts on whole child topics (www.wholechildeducation.org).
- A Whole Child Resolution webinar, sample resolution language, and a resolution checklist offer suggestions for persuading your policymakers to introduce a Whole Child Resolution (www.ascd.org/policy).
- ASCD's legislative agenda outlines the association's public policy priorities (www.ascd.org/legislativeagenda).
- ASCD's free consultations identify online, on-site, or blended professional development solutions that can help your school or district improve in their most challenged areas (www.ascd.org/pls).